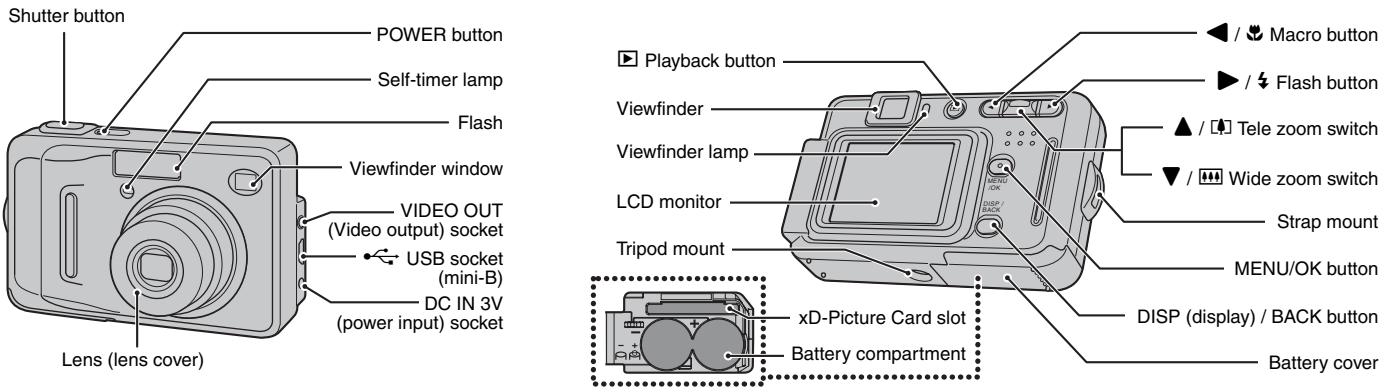


FinePix A400/FinePix A500 Quickstart

Camera Controls



BL00530-200(1) E

Picture Taking

Refer to Owner's Manual for more detailed instructions

A. Loading the Batteries

- Open the battery cover. Check that the camera is turned off before opening the battery cover.
- Load the batteries correctly as indicated by the polarity icons.
- Close the battery cover.

B. Setting up the Camera

- Press POWER down fully to turn the camera on.
- You can select your preferred date format.
- Press ◀ or ▶ to select the date format, Year, Month, Day, Hour, or Minute.
- Press ▲ or ▼ to correct the setting.

- Press MENU/OK after you complete the setting.
* Refer to the Owner's Manual for "Setting the Date and Time".

C. Taking Pictures

- Press POWER down fully to turn the camera on.
- Press the shutter button down halfway to adjust the focus.
- Press the shutter button down fully to take a picture. The camera makes a "Beep" sound and takes the picture.

D. Viewing the Images

- Press ▶.
- Press ◀ or ▶ to move through your images.

FinePix A400/FinePix A500 has internal memory that can store images without xD-Picture Card. Use an xD-Picture Card (sold separately) when recording a large number of images.

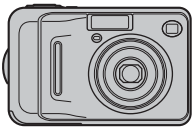
Still images that can be viewed on FinePix A400 / FinePix A500

You can use this camera to view still images recorded on FinePix A400 / FinePix A500 or still images (excluding some uncompressed images) recorded on a FUJIFILM digital camera that supports xD-Picture Card.

Viewing Images on your PC



A. Installing Software



B. Connecting the Camera to your PC

C. Saving Images



A. Installing Software


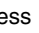
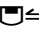
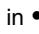
Do not connect the camera to your PC until the software installation is completed.

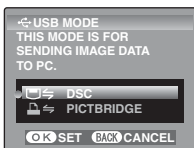
1. Turn on your PC and start up Windows.
 - Users of Windows 2000 Professional or Windows XP should log in by using a system administrator account (e.g. "Administrator").
2. Quit all other active applications until no applications are shown in the taskbar.
3. Load the enclosed CD-ROM into the CD-ROM drive. The installer starts up automatically.
4. The Setup screen appears. Click the [Installing FinePixViewer] button.




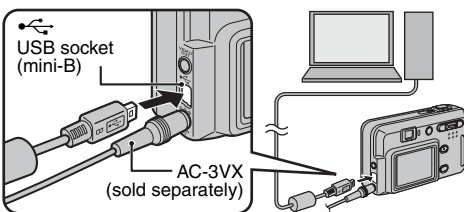
5. After installation completed, press [Close] button.


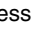
B. Connecting the Camera to your PC

1. Insert the xD-Picture Card with images into the camera.
2.  Press  for about 1 second to turn the camera on in Playback mode.
Select  DSC in  USB MODE in the SET-UP menu. Refer to the Owner's Manual for "Using the SET-UP menu".



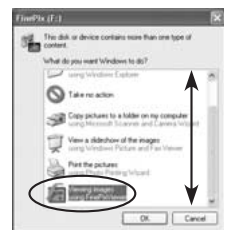
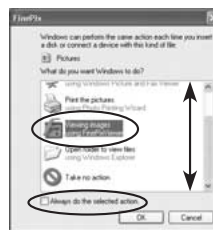
3.  Press POWER to turn the camera off.
4. If you have one, plug the AC power adapter connector into the "DC IN 3V" socket on the camera and then plug the adapter itself into the main power outlet, otherwise be sure your batteries are fresh and charged.
5. Turn your PC on.
6. Connect the camera to your PC using the USB cable (mini-B).



7.  Press  for about 1 second to turn the camera on in Playback mode.
8. Windows 98/98 SE/Me/2000 Professional
FinePixViewer starts up automatically.

Windows XP

- ① The "Found New Hardware" help message appears in the bottom-right corner of your screen. This message will close when the settings are completed. No action is required.
- ② Specify the settings in the "AutoPlay" dialog box.
- ③ Select "Viewing images using FinePixViewer" and then select the "Always do the selected action" checkbox.



- ④ Click the [OK] button to launch FinePixViewer.



C. Saving the Images

1. The Save Image Wizard starts up. Click the [NEXT] button.
2. Check that the files are downloaded from the camera to your PC and that a folder with the date is created.
Ex. \My Documents \ My Pictures \ 2006_0124 Image

D. Viewing the Images

1. Click the [Show List of Images] button.



2. Select "Preview" in the View menu to display an enlarged image.

For more information

Refer to "How to use FinePixViewer" in the HELP menu, or "Software Installation" in the Owner's Manual, or visit Fujifilm "Q&A Search" in the following website.
(<http://home.fujifilm.com/products/digital/>)
For Macintosh users, refer to "Software Installation" in the Owner's Manual.